

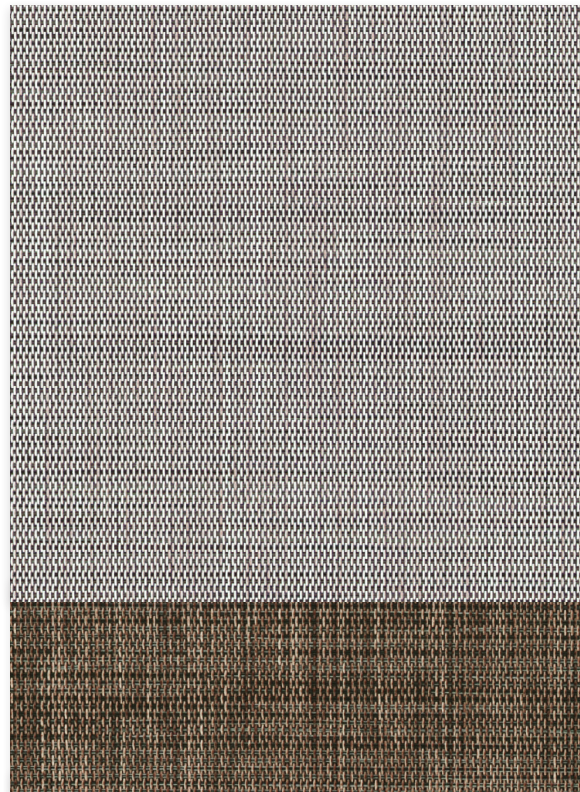
Deco Screen

Decorative | 3% 5% openness



3%

00D249 | Flagstone



00D137
River Rock

00D237
Hazelnut



5%

00D249 | Flagstone



00D012
Parchment

00D212
Tumbleweed

00D112
Naturelle

00D226
Harvest

Specifications

Item Number
Product Category
Fabric Style
Openness Factor
Composition
UV Blockage
Standard Packaging
Width
Weight
Thickness

3% 008553 | **5%** 008555
Decorative
Rib Weave
3% & 5%
36% Fiberglass | 64% Vinyl
Approximately 95% - 97%
Rolls of 30 ly (27 lm)
98" (250 cm)
3% 12.21 oz/yd² (414 g/m²) ±5% | **5%** 11.3 oz/yd² (385 g/m²) ±5%
3% .023 in (0.58 mm) ±5% | **5%** .020 in (0.52 mm) ±5%

Classifications

Fire Classifications

NFPA 701-10 TM#1, California U.S. Title 19,
CAN/ULC-S109-03 Small & Large Flame Test

Bacterial & Fungal Resistance
Environment

ASTM E2180, ASTM G21

Acoustical Performance

RoHS - Lead Free, GREENGUARD Gold

3% NRC: 0.35, SAA: 0.33 | **5%** NRC: 0.10, SAA: 0.12

Fabrication

Cutting: Cold, Ultrasonic or Crush | **Welding:** Radio Frequency, High Frequency, Impulse, Hot Air or Wedge

We recommend testing all cutting and welding methods prior to use to confirm they meet your individual fabric specifications.

Deco Screen

ITEM	COLOR
00D249	Flagstone
00D137	River Rock
00D237	Hazelnut
00D012	Parchment
00D212	Tumbleweed
00D112	Naturelle
00D226	Harvest

FABRIC

thermal						optical			
Rs		As		Ts		Rv		Tv	
3	5	3	5	3	5	3	5	3	5
23	20	71	72	6	8	23	20	5	7
33	33	60	57	7	10	35	35	6	9
13	14	83	79	4	7	12	13	4	7
64	63	20	21	16	16	67	66	12	12
30	29	62	61	8	10	30	29	6	8
54	52	33	33	13	15	57	54	9	11
15	16	79	76	6	8	14	15	5	6

FABRIC + GLASS

commercial		residential	
SHGC Improvement		SHGC	
3	5	3	5
24%	21%	0.54	0.57
29%	29%	0.49	0.50
16%	16%	0.59	0.60
50%	47%	0.33	0.34
26%	24%	0.51	0.53
42%	39%	0.38	0.40
18%	18%	0.58	0.59

Warranty

5 Year Exterior & 10 Year Interior

Care & Cleaning

Remove dust with a vacuum cleaner or compressed air. Do not scrub. Do not use solvents or any abrasive substance which might damage the coating of the fabric. Clean with a sponge or soft brush dipped in soapy water using a mild detergent. Rinse with clean water. Leave the blind down until completely dry. You can also very gently rub the fabric with a clean white pencil eraser to remove small stains.

The fabric performance tests were conducted in accordance with ASTM E891 & ASTM E903-96: Solar Transmittance (Ts), Solar Reflectance (Rs), Solar Absorptance (As), Visible Reflectance (Rv), and Visible Transmission (Tv). Glass performance tests for Solar Heat Gain Coefficient (SHGC) were conducted using the Lawrence Berkeley National Laboratory Window 7.3 NFRC certified software. SHGC % improvement for commercial applications is based on a standard commercial glass makeup of Double Glazing 6 mm | 1/2" air | 6 mm with low E on surface #2. SHGC for residential applications is based on a default residential glass makeup of 3mm clear glass | 1/2" air | 3mm clear glass. Results for SHGC were obtained using the center of glass. Acoustical performance was tested in accordance with ASTM C423-09a: NRC is Noise Reduction Coefficient, SAA is Sound Absorption Average. For up-to-date test results, performance specifications and larger samples, contact the Mermet Technical Department at www.mermetusa.com.

Mermet Corporation
5970 N. Main Street ■ Cowpens, SC 29330
Ph 1.866.902.9647 ■ info@mermetusa.com

mermetusa.com