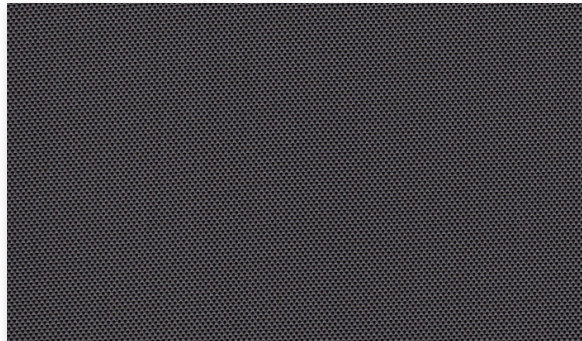


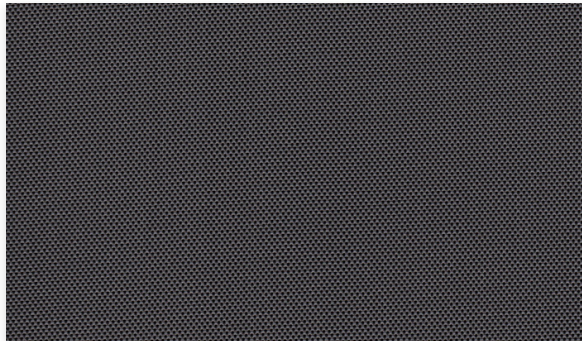
E Screen

Conventional | 1% 3% 5% 10% openness



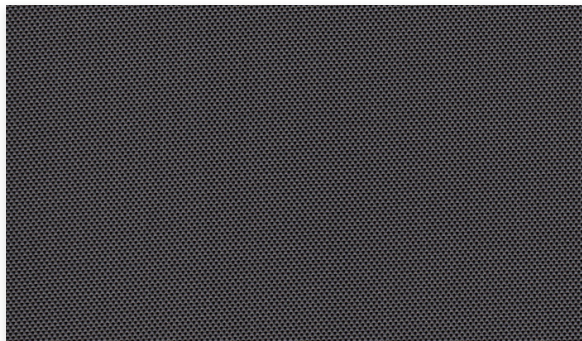
1%

030001 | Charcoal/Grey



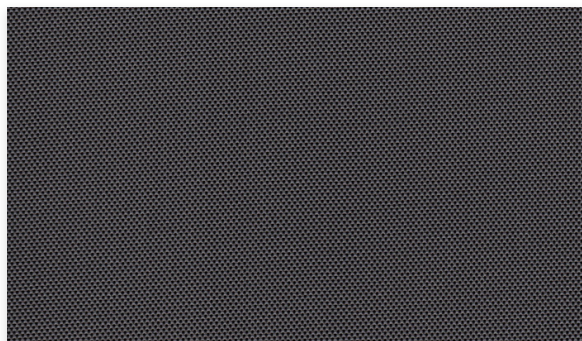
3%

030001 | Charcoal/Grey



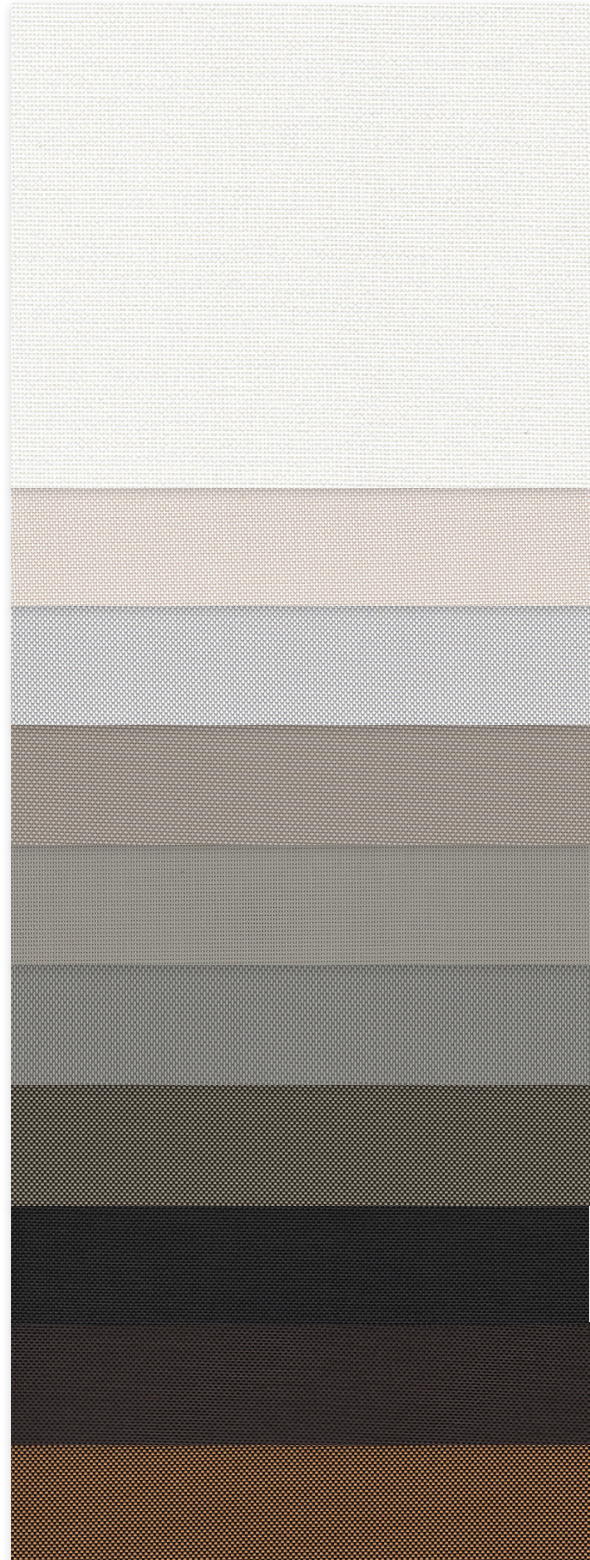
5%

030001 | Charcoal/Grey



10%

030001 | Charcoal/Grey



002002
White/White

002020
White/Linen

002007
White/Pearl

007020
Pearl/Linen

007007
Pearl/Pearl

007001
Pearl/Grey

00M122
Charcoal/Grey-Stone

030030
Charcoal/Charcoal

030061
Charcoal/Cocoa

030071
Charcoal/Apricot

Fabrics sampled on waterfall are 5% openness.

Specifications

Item Number

Product Category

Fabric Style

Openness Factor

Composition

UV Blockage

Standard Packaging

Width

Weight

Thickness

1% 007501 | 3% 007503 | 5% 007505 | 10% 007510

Conventional

Basketweave

1%, 3%, 5% & 10%

36% Fiberglass & 64% Vinyl

Approximately 90% - 99%

Rolls of 30 ly (27 lm)

78 in (200 cm), 98 in (250 cm), 122 in (310 cm)

1% 13.3 oz/yd² (452 g/m²) ±5%

5% 10.7 oz/yd² (363 g/m²) ±5%

1% .020 in (0.52 mm) ±5%

5% .016 in (0.41 mm) ±5%

3% 11.6 oz/yd² (393 g/m²) ±5%

10% 10.3 oz/yd² (350 g/m²) ±5%

3% .017 in (0.43 mm) ±5%

10% .020 in (0.52 mm) ±5%

Classifications

Fire Classifications

NFPA 701-10 TM#1, California U.S. Title 19, CAN/ULC-S109-03 Small & Large Flame Test

Bacterial & Fungal Resistance

ASTM E2180, ASTM G21

Environment

RoHS - Lead Free, GREENGUARD Gold

Acoustic

1% NRC 0.50, SAA 0.50

5% NRC 0.10, SAA 0.12

3% NRC 0.15, SAA 0.17

10% NRC 0.05, SAA 0.06

Fabrication

Cutting: Cold, Ultrasonic or Crush | **Welding:** Radio-Frequency, High Frequency, Impulse, Hot Air or Wedge

We recommend testing all cutting and welding methods prior to use to confirm they meet your individual fabric specifications.

E Screen 1% & 3%

ITEM COLOR

030001	Charcoal/Grey
002002	White/White
002020	White/Linen
002007	White/Pearl
007020	Pearl/Linen
007007	Pearl/Pearl
007001	Pearl/Grey
00M122	Charcoal/Grey-Stone
030030	Charcoal/Charcoal
030061	Charcoal/Cocoa
030071	Charcoal/Apricot

E Screen 5% & 10%

ITEM COLOR

030001	Charcoal/Grey
002002	White/White
002020	White/Linen
002007	White/Pearl
007020	Pearl/Linen
007007	Pearl/Pearl
007001	Pearl/Grey
00M122	Charcoal/Grey-Stone
030030	Charcoal/Charcoal
030061	Charcoal/Cocoa
030071	Charcoal/Apricot

FABRIC

thermal Total Solar						optical			
Rs (%)		As (%)		Ts (%)		Rv (%)		Tv (%)	
1	3	1	3	1	3	1	3	1	3
9	10	88	85	3	5	8	10	2	5
75	73	11	11	14	16	80	78	11	13
66	63	20	21	14	16	69	66	10	12
58	52	33	38	9	10	62	56	6	8
39	39	54	48	7	13	41	42	5	11
33	32	62	59	5	9	35	34	3	8
29	27	66	63	5	10	30	27	3	8
11	13	87	80	2	7	11	13	2	6
4	5	95	91	1	4	4	5	1	4
5	7	93	89	2	4	5	7	2	3
13	18	86	75	1	7	14	18	1	7

FABRIC + GLASS

commercial SHGC % Improvement				residential SHGC			
Interior		Exterior		Interior		Exterior	
1	3	1	3	1	3	1	3
16	16	84	84	0.58	0.60	0.11	0.11
61	58	82	82	0.25	0.28	0.12	0.14
53	47	82	82	0.31	0.34	0.13	0.14
47	42	87	84	0.34	0.38	0.10	0.11
37	34	84	79	0.42	0.44	0.11	0.15
34	32	84	82	0.45	0.47	0.10	0.13
29	26	84	79	0.47	0.50	0.11	0.14
18	18	82	79	0.54	0.55	0.11	0.14
13	13	84	84	0.60	0.62	0.10	0.11
16	13	84	84	0.59	0.62	0.11	0.10
18	18	84	82	0.56	0.57	0.09	0.12

thermal Total Solar						optical				commercial SHGC % Improvement				residential SHGC			
Rs (%)		As (%)		Ts (%)		Rv (%)		Tv (%)		Interior		Exterior		Interior		Exterior	
5	10	5	10	5	10	5	10	5	10	5	10	5	10	5	10	5	10
10	8	83	80	7	12	10	8	7	11	16	11	82	82	0.62	0.65	0.12	0.14
71	66	9	9	20	25	76	70	17	22	55	50	76	71	0.30	0.35	0.17	0.21
62	58	18	17	20	25	65	62	16	22	47	42	76	71	0.36	0.39	0.17	0.21
51	50	37	30	12	20	55	54	9	18	39	37	84	74	0.40	0.43	0.12	0.18
37	35	48	46	15	19	40	37	12	17	34	32	76	76	0.45	0.48	0.16	0.19
31	30	57	54	12	16	33	31	10	14	29	26	79	76	0.48	0.50	0.15	0.17
27	26	61	58	12	16	27	26	10	14	26	24	79	74	0.50	0.52	0.15	0.17
12	10	79	79	9	11	12	11	9	11	18	16	76	76	0.56	0.58	0.15	0.16
6	3	90	85	4	12	5	4	4	12	13	8	84	79	0.64	0.67	0.10	0.14
6	5	87	84	7	11	6	5	7	11	13	11	82	82	0.64	0.66	0.12	0.13
15	14	78	72	7	14	16	14	6	13	18	16	84	79	0.59	0.62	0.11	0.15

Warranty

Care & Cleaning

Mermet Corporation

5970 N. Main Street ■ Cowpens, SC 29330

Ph 1.866.902.9647 ■ info@mermetusa.com

mermetusa.com

5 Year Exterior & 10 Year Interior

Remove dust with a vacuum cleaner or compressed air. Do not scrub. Do not use solvents or any abrasive substance which might damage the coating of the fabric. Clean with a sponge or soft brush dipped in soapy water using a mild detergent. Rinse with clean water. Leave the blind down until completely dry. You can also very gently rub the fabric with a clean white pencil eraser to remove small stains.

The fabric performance tests were conducted in accordance with ASTM E891 & ASTM E903-96: Total Solar Transmittance (Ts), Total Solar Reflectance (Rs), Total Solar Absorbance (As), Visible Reflectance (Rv), and Visible Transmission (Tv). Glass performance tests for Solar Heat Gain Coefficient (SHGC) were conducted using the Lawrence Berkeley National Laboratory Window 7.3 NFRC certified software. SHGC % improvement for commercial applications is based on a standard commercial glass makeup of Double Glazing 6 mm / 1/2" air / 6 mm with low E on surface #2. SHGC for residential applications is based on a default residential glass makeup of 3mm clear glass / 1/2" air / 3mm clear glass. Results for SHGC were obtained using the center of glass. Acoustical performance was tested in accordance with ASTM C423-09a: NRC is Noise Reduction Coefficient, SAA is Sound Absorption Average. For up-to-date test results, performance specifications and larger samples, contact the Mermet Technical Department at: www.mermetusa.com.