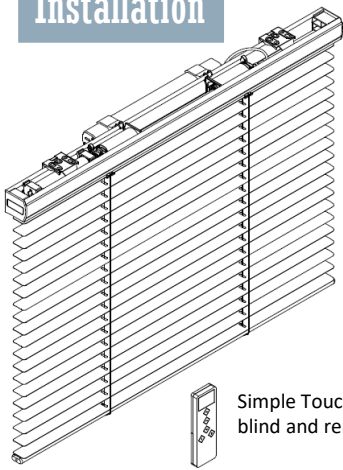


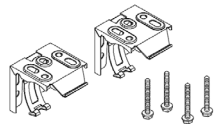
Simple Touch® Motorized Aluminum Blind

Installation



Simple Touch aluminum blind and remote

Identify your aluminum blind and parts (your parts may vary, depending on the custom request, size of the headrail & blind you are purchasing.)



Brackets & screws

| blind width | Qty of brackets |
|----------------------|-----------------|
| $W \leq 39.5"$ | 2 |
| $39.5" < W \leq 67"$ | 3 |
| $67" < W \leq 96"$ | 4 |
| $96" < W \leq 120"$ | 5 |



Mounting brackets

Rechargeable battery pack (10.5" x 1" x 1")

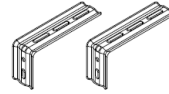
20" cord

Screws

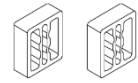
USB wall charger

80" USB-C cord

Rechargeable battery pack (*The default quantity of the charger and USB cord is 1 set per order. You can request more sets at no cost up to the same quantity as the rechargeable battery pack you ordered.)

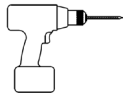


Extension brackets (optional)



Spacers (optional)

Tools you may need (not included)



Drill with bits



Metal tape measure



Pen



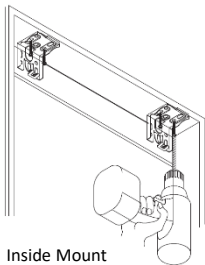
#4 x 3/4" flat head wood screw



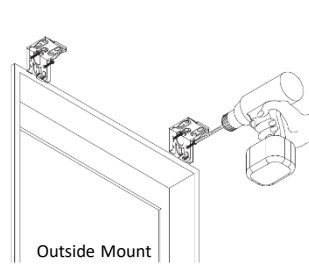
Screwdriver

Install the brackets

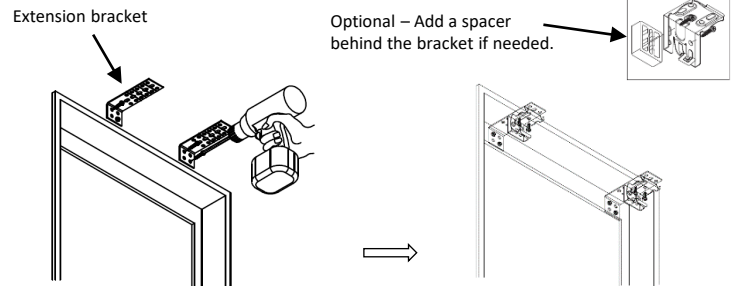
- Mark the bracket locations. Space the brackets evenly and make sure the brackets will not interfere with any mechanism or other internal headrail parts.
- Install the brackets using screws (included) and tighten them completely.
- Make sure all brackets are aligned and level with each other.
- Install the blind with extension brackets (optional)
 - Install the extension bracket with at least 2 screws.
 - Attach the hidden brackets to the extension brackets with the screws.



Inside Mount



Outside Mount

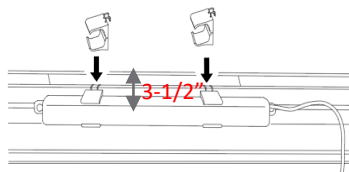


Extension bracket

Optional – Add a spacer behind the bracket if needed.

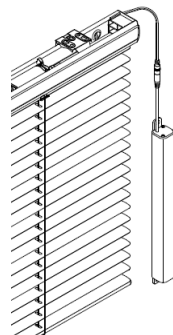
Install the rechargeable battery pack

- The rechargeable battery pack can either be hooked behind the headrail or mounted to the wall or window frame.
- Refer to the Simple Touch rechargeable battery pack user guide to install the battery pack.



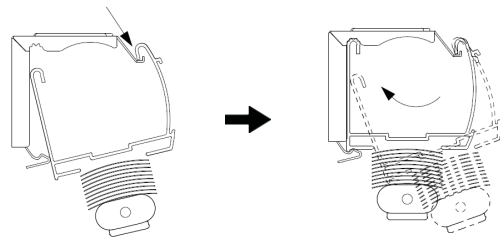
The minimum flush mounting space is 3-1/2" ~4".

or



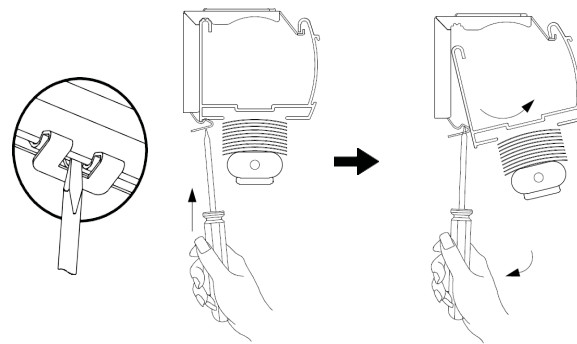
Attach the blind

- Position the headrail with the front lip resting on the top hooks of all the brackets.
- Push the bottom of headrail firmly upward and toward the window until the groove at the bottom of the headrail snaps into place.

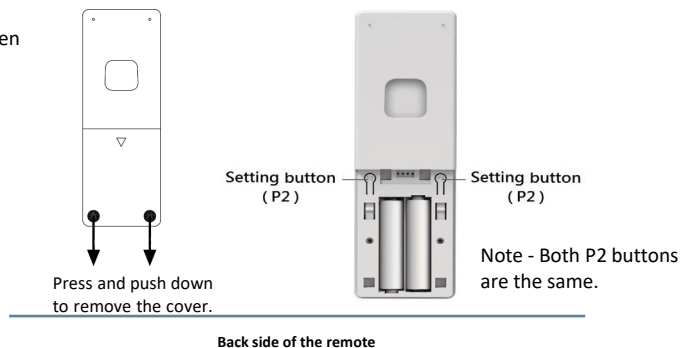
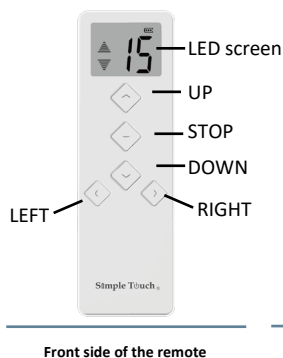
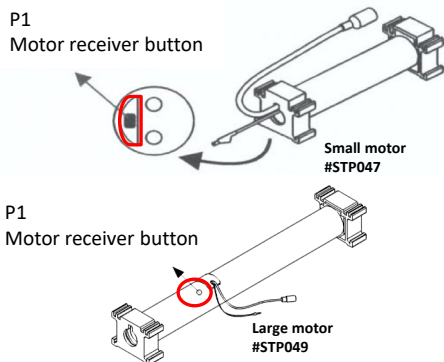


How to remove the blind from the brackets

- Press the **UP** button to raise the blind completely.
- Use a flat screw to push the bracket tab toward to the wall. Once you hear a “click”, then the blind will be released from the bracket.
- Repeat above step to release the blind from other brackets.



Programming Guide for the Simple Touch Aluminum Blind

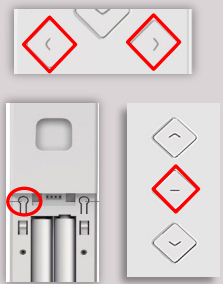


- The 15-channel remote is powered by 2 of AAA Alkaline batteries. Replacing the batteries or recharge the battery pack doesn't affect the setting of the shades.
- Group control is on channel #0.
- Option to set up “MY FAVORITE POSITION” if you prefer, simply follow the instructions below. Once you have set it up, you will be able to quickly access your preferred position with just the press of the STOP button.

Optional Programming Instructions

PROGRAMMING FOR MY FAVORITE POSITION

Set Up My Favorite Position



Step 1. Click the **LEFT** or **Right** buttons to select the channel you wish to program.

Step 2. Raise the shade all the way up by clicking the **UP** button. Skip this step if the shade is already at the top position.

Step 3. Adjust the bottom rail to your favorite height by clicking the **DOWN** or **UP** buttons.

Step 4. Click either one of the **P2** buttons. The shade jogs once.

JOG x 1

Step 5. Click the **STOP** button once. The shade jogs once.

JOG x 1

Step 6. Click the **STOP** button again. The shade jogs twice.

JOG x 2

My favorite position set up is done.

Remove My Favorite Position

Step 1. Click either one of the **P2** buttons. The shade jogs once.

JOG x 1

Step 2. Click the **STOP** button once. The shade jogs once.

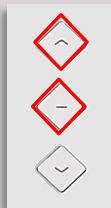
JOG x 1

Step 3. Click the **STOP** button again. The shade jogs once.

JOG x 1

Remove My Favorite Position is done.

ADJUST THE TOP LIMIT



Step 1. Click the **LEFT** or **Right** buttons to select the channel you wish to program.

Step 1. Press the **STOP** and **UP** buttons for about 5 seconds until the shade jogs once.

JOG x 1

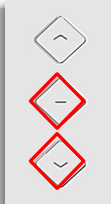
Step 2. Use the remote to control the shade to the desired upper position.

Step 3. Press the **STOP** and **UP** buttons for about 2-3 seconds until the shade jogs twice.

JOG x 2

Adjust the top limit is done.

ADJUST THE BOTTOM LIMIT to fit your window height



Step 1. Press the **STOP** and **DOWN** buttons for about 5 seconds until the shade jogs once.

JOG x 1

Step 2. Use the remote to control the bottom rail to fit your window height.

Step 3. Press the **STOP** and **DOWN** buttons for about 2-3 seconds until the shade jogs twice.

JOG x 2

Adjust the bottom limit is done.

ADD/ REMOVE A DUPLICATED REMOTE CONTROL

ADD



Step 1. Select the channel you wish to copy by clicking the **LEFT** or **RIGHT** buttons on both **EXISTING** and **NEW** remotes.

Step 2. Click one of the **P2** buttons once on the existing remote. The shade jogs once.

JOG x 1

Step 3. Click the same **P2** button again. The shade jog once.

JOG x 1

Step 4. Click one of the **P2** buttons on the new remote. The shade jogs twice.

JOG x 2

REMOVE

Process the step 1 to 4 above to remove the remote.

LOCK/ UNLOCK 3 FRONT BUTTONS to prevent resetting the top and bottom limits

LOCK



Step 1. Press and hold the **STOP** button until “L” shown on the screen (about 15-20 seconds).

Step 2. Click **P2** button once, then the “half 0” symbol will be shown on the screen. **The lock setup** is done.

UNLOCK

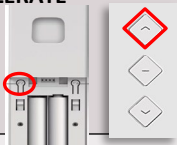


Step 1. Press and hold the **STOP** button until “U” shown on the screen (about 15-20 seconds).

Step 2. Click **P2** button once, then the “half 0” symbol will be shown on the screen. **The unlock setup** is done.

ADJUST THE MOTOR SPEED (Three speeds are available. The slowest speed is the default setting)

ACCELERATE



Step 1. Click one of the **P2** buttons once. The shade jogs once.

JOG x 1

Step 2. Click the **UP** button. The shade jogs once.

JOG x 1

Step 3. Click the **UP** button again. The shade jogs twice.

JOG x 2

DECELERATE



Step 1. Click one of the **P2** buttons once. The shade jogs once.

JOG x 1

Step 2. Click the **DOWN** button. The shade jogs once.

JOG x 1

Step 3. Click the **DOWN** button again. The shade jogs twice.

JOG x 2

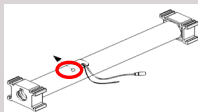
REVERSE THE MOTOR DIRECTION

P1 motor receiver button



Step 1. Press the **P1** button on the shade you wish to program until the shade jogs 3 times (about 10 seconds). The location of the P1 button can be found on page 1.

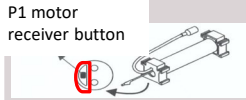
JOG x 3



NOTE. The **P1** button is on the **side of the small motor** or on the **top of the larger motor**. Refer to page 1 for the P1 locations.

In the rare instance that you may have to do the “FACTORY RESET”, follow the steps at right. Then, complete the programming of “PAIR THE REMOTE TO THE SHADE” and “set up TOP & BOTTOM LIMITS” before operating the motorized shade again.

FACTORY RESET

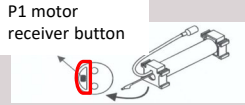


Step 1. Press the **P1** button on the shade you wish to reset until the shade jogs 4 times (about 15 seconds).

JOG x 4

Note. DO NOT RELEASE the P1 button during this step. If accidentally release it, please must redo it again. Different numbers of jogs will result in different settings.

PAIR THE REMOTE TO THE SHADE



Step 1. Press the **P1** button on the same shade about 2-3 seconds. The shade jogs once.

JOG x 1

Step 2. Select the channel on the remote.

Step 3. Press the **STOP** button on the remote for about 2-3 seconds. The shade jogs twice. Make sure you stay at the same channel.

JOG x 2

SET UP THE TOP AND BOTTOM LIMIT

TOP Limit



Step 1. Move the shade to the top position by pressing the **UP** button.

Step 2. Press both **UP** and **STOP** buttons for about 2-3 seconds. The shade jogs twice.

JOG x 2

Bottom Limit



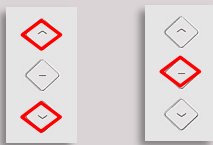
Step 1. Move the bottom rail to the bottom position by pressing the **DOWN** button.

Step 2. Press both **DOWN** and **STOP** buttons for about 2-3 seconds. The shade jogs twice.

JOG x 2

SET UP THE MOTOR TO JOG MODE (The jog mode allows you to tilt the slats by clicking the UP or DOWN button.)

Jog mode



Step 1. Press both **UP** and **DOWN** buttons for about 5 seconds. The shade jogs once.

JOG x 1

Step 2. Click the **STOP** button. The shade jogs once.

JOG x 1

Note. The default mode of the motor is the continuous mode. Switch to jog mode will allows you to tile the slats by clicking the UP or DOWN button.

Continuous Mode

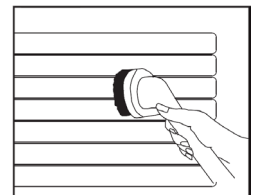
Repeat step 1 and step 2 above to switch the motor back to continuous mode.

Care and Clean

- Wipe the blind periodically with a soft dust cloth or dusting mitt, or vacuum with a lowest speed.

Notes

- Do not spill water to the headrail and the wand.
- Do not clean or operate the motorized blind with wet hands
- The warranty of your blinds does not cover damage caused by improper cleaning.
- The motorized blind is for indoor use only.
- Do not use the motorized blinds at the wet area.



FCC ID
#2AWSE-STP054

FOR INDOOR USE ONLY

FOR INDOOR USE ONLY

This motorized shade has been tested and found to complete with the limits for a Class B digital device, pursuant to part 15 of the FCC rules. These limits are designed to provide reasonable protection against harmful interference in a residential installation. This shade generates, uses and can radiate radio-frequency energy. If this shade is not installed and used in accordance with the instructions, it may cause harmful interference to radio communications. However, there is no guarantee that interference will not occur in a particular installation. If this shade does cause harmful interference to radio or television reception, which can be determined by turning the shade off and on, correct the interference by one or more of the following measures:

- Reorient or relocate the receiving antenna.
- Increase separation between shade and receiver.
- Connect equipment to an outlet on a circuit different from that to which the receiver is located.
- Consult your dealer or an experienced radio/TV technician.

Any changes or modifications to the product that are not expressly approved by HT could void the user's authority to operate this shade. Use of a shielded interface cable is required to comply with the Class B limits of Part 15 of FCC rules. For more regulatory information, see the electronic user guide. HT shall not be liable for any direct, indirect, incidental, consequential, or other damage alleged in connection with the furnishing or use of this information.