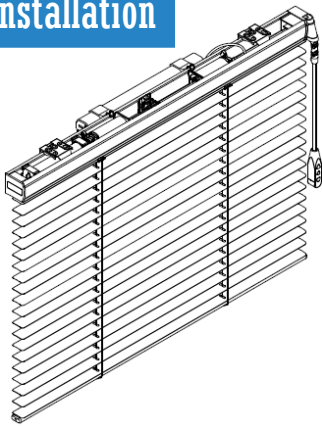


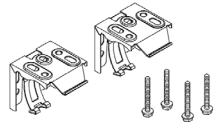
Simple Touch® Wand Aluminum Blind User Guide

Installation



Simple Touch Wand
Motorized aluminum blind

Identify your aluminum blind and parts (your parts may vary, depending on the custom request, size of the headrail & blind you are purchasing.)



Brackets & screws

blind width	Qty of brackets
W ≤ 36"	2
36" < W ≤ 48"	3
48" < W ≤ 72"	3
72" < W ≤ 96"	4
96" < W ≤ 120"	5

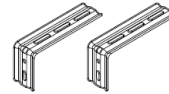


Mounting brackets

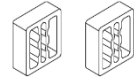
Screws

USB wall charger

Rechargeable battery pack (*The default quantity of the charger and USB cord is 1 set per order. You can request more sets at no cost up to the same quantity as the rechargeable battery pack you ordered.)

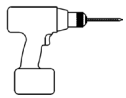


Extension brackets (optional)



Spacers (optional)

Tools you may need (not included)



Drill with bits



Metal tape measure



Pen



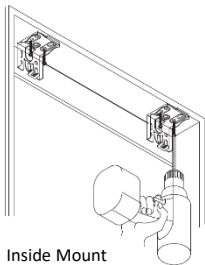
#4 x 3/4" flat
head wood screw



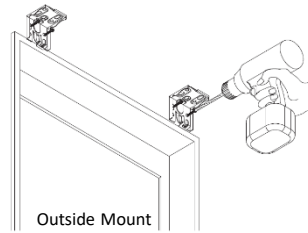
Screwdriver

Install the brackets

- Mark the bracket locations. Space the brackets evenly and make sure the brackets will not interfere with any mechanism or other internal headrail parts.
- Install the brackets using screws (included) and tighten them completely.
- Make sure all brackets are aligned and level with each other.
- Install the blind with extension brackets (optional)
 - Install the extension bracket with at least 2 screws.
 - Attach the hidden brackets to the extension brackets with the screws.

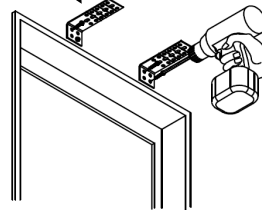


Inside Mount

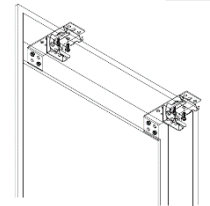
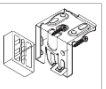


Outside Mount

Extension bracket

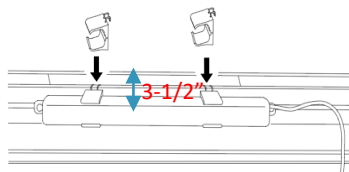


Optional – Add a spacer behind the bracket if needed.



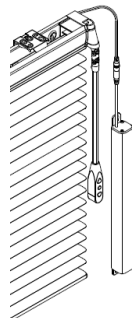
Install the rechargeable battery pack

- The rechargeable battery pack can either be hooked behind the headrail or mounted to the wall or window frame.
- Refer to the Simple Touch rechargeable battery pack user guide to install the battery pack.



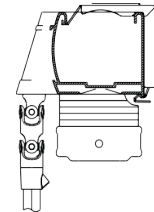
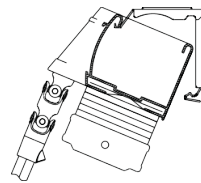
The minimum flush mounting space is 3-1/2" ~4".

or



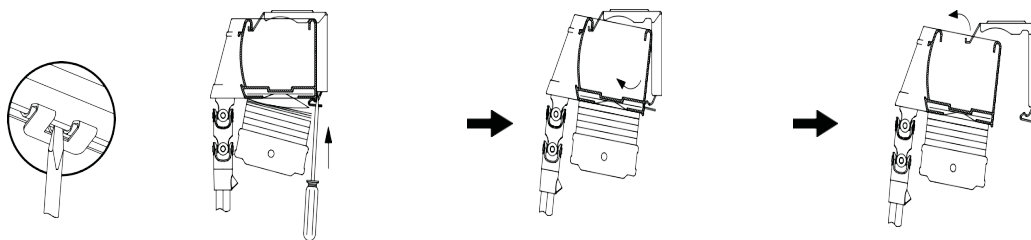
Attach the blind

- Position the headrail with the front lip resting on the top hooks of all the brackets.
- Push the bottom of headrail firmly upward and toward the window until the groove at the bottom of the headrail snaps into place.

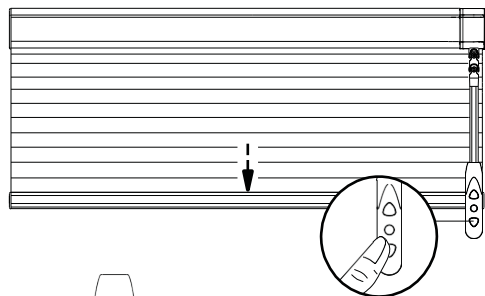


How to remove the blind from the brackets

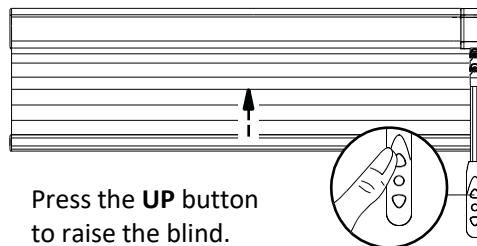
- Press the **UP** button to raise the blind completely.
- Use a flat screw to push the bracket tab toward the wall. Once you hear a “click”, then the blind will be released from the bracket.
- Repeat above step to release the blind from other brackets.



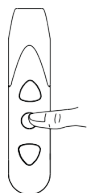
Operate the Simple Touch Wand Motorized aluminum blind



Press the **DOWN** button to lower the blind.



Press the **UP** button to raise the blind.



Press the **STOP/MY FAVORITE** button to stop the moving.
Press and hold the **STOP/MY FAVORITE** button to stop the moving



Before set up the TOP and BOTTOM limits

- The bottom rail only travels while pressing the **UP** or **DOWN** button.
- Click the **STOP** button to stop the moving.

After set up the TOP and BOTTOM limits and Before set up “MY FAVORITE POSITION”

- Press and hold the **Up** or **Down** button for about 5 seconds, the blind will travel either to the top or bottom limit without pressing the buttons
- Click the **STOP** button to stop the moving.

After set up “MY FAVORITE POSITION”

- Press and hold “**My Favorite**” button for 2-5 second, the bottom rail will travel to the Favorite position.

Care and Clean

- Wipe the blind periodically with a soft dust cloth or dusting mitt, or vacuum with a lowest speed.

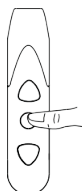
Notes

- Do not spill water to the headrail and the wand.
- Do not clean or operate the motorized blind with wet hands
- The warranty of your blinds does not cover damage caused by improper cleaning.
- The motorized blind is for indoor use only.
- Do not use the motorized blinds at the wet area.

NOTE

This Simple Touch® Wand motorized blind is already programmed with the TOP and BOTTOM Limits. Option to program "My Favorite Position" followed with the instructions below. Enjoy your new motorized blind!

Set up My Favorite Position

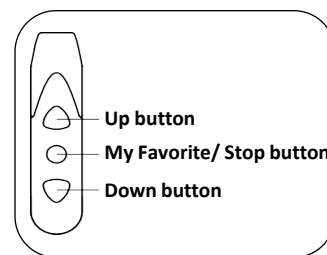
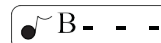


Operate the blind to your favorite position

Press "My Favorite" button for 5 seconds until you hear a long "B".

Press "My Favorite" button again for 3 seconds, then hear 3 short "B".

Set up "My Favorite Position" is done.



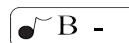
NOTE

To reprogram this motorized blind, please follow the steps below.

Set Clear



Press all 3 buttons at the same time until you hear a long "B".



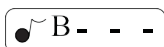
"Clear" is done.

Set up the TOP Limit



Press and hold the "UP" button to move the blind to very top.

Press both "UP" & "My Favorite" buttons at the same time for 5 seconds until you hear 3 short "B".



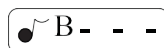
Set up the "TOP Limit" is done.

Set up the Bottom Limit



Press and hold the "Down" button to move the blind all the way down to the dropped height.

Press both "Down" & "My Favorite" buttons at the same time for 5 seconds until you hear 3 short "B".



Set up the "Bottom Limit" is done.

To change "My Favorite Position"

- Clear all limits setting by pressing all 3 buttons at the same time until you hear a long "B".
- Follow the above programming to "Set up the TOP Limit", "Set up the Bottom Limit", and then "Set up My Favorite Position".