

CONTENTS	PAGE
Getting Started:	
• Product Button/Headrail/Remote Battery Diagram-----	2
• Entering User Mode-----	3
• Setting your Top Limit (Motorized Wand & Remote)-----	3
• Setting your Bottom Limit (Motorized Wand & Remote)-----	4
• Exiting User Mode-----	4
• Adding Remote Control - Using Motorized Wand-----	5
• Adding Remote Control - Using Remote Control-----	5
• Deleting Stopping Point-----	5
• Increasing Shade Lifting Speed-----	6
• Reducing Shade Lifting Speed-----	6
• Charging Motorized Wand-----	6
• Deleting Remote Control - Using Shade Motor-----	7
• Shade Reversal-----	7
• Deleting a Remote Control (Using Multiple Remotes)-----	7
• Deleting All Remotes-----	8
• Switching Between Short/Continuous Movement-----	8
• Restoring Factory Settings-----	8
Questions?	
• Contact your Dealer	

Thank you for Choosing our Sheerview Shade for your Residential or Commercial Property.

We are confident that you will find our Motorized Sheerview Shade to be of superior quality and value, compared to other shades available.

In this guide, you will find useful information about installation, child safety, cleaning, and warranty when using your shade.

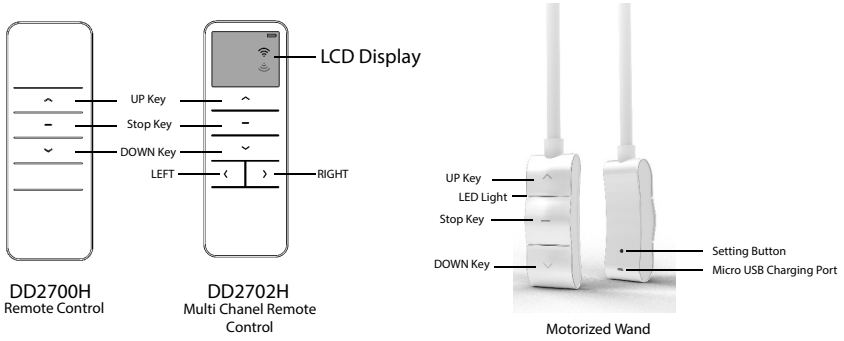
READ ALL INSTALLATION INSTRUCTIONS BEFORE INSTALLING

Contacting Us:

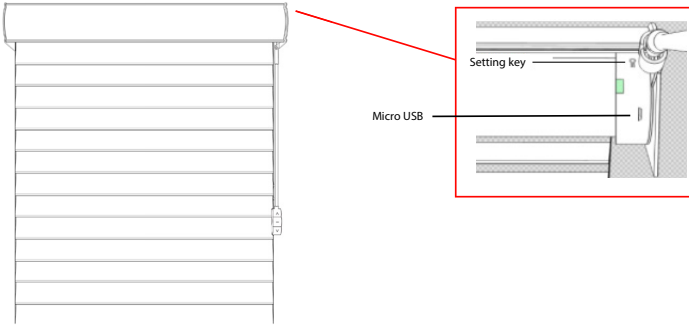
Contact your Dealer regarding any question or concerns about your product.

PLEASE KEEP FOR FUTURE REFERENCE / TROUBLESHOOTING

PRODUCT BUTTON DIAGRAM:

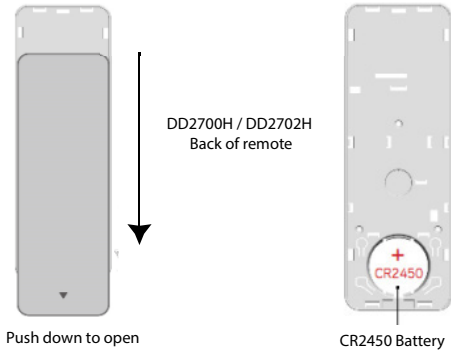


HEADRAIL DIAGRAM:

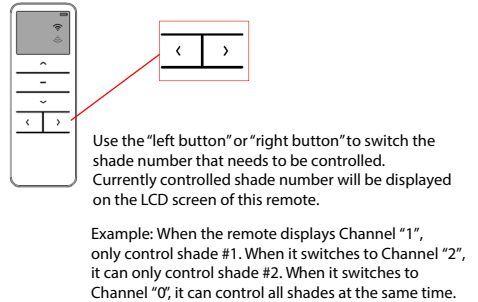


Headrail setting key location: inside the side cover on the left or right side of the shade. Above Micro USB interface

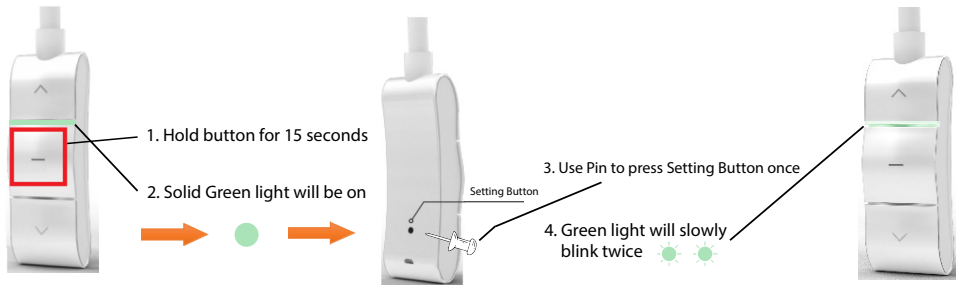
CEMENT BATTERY:



DD2702H MULTI CHANNEL REMOTE INSTRUCTIONS

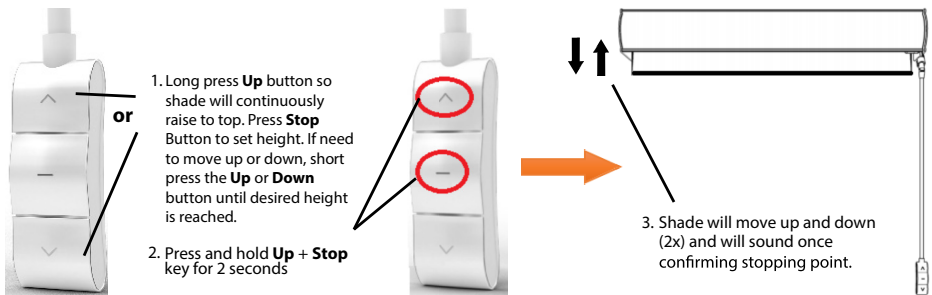


ENTERING THE USER MODE



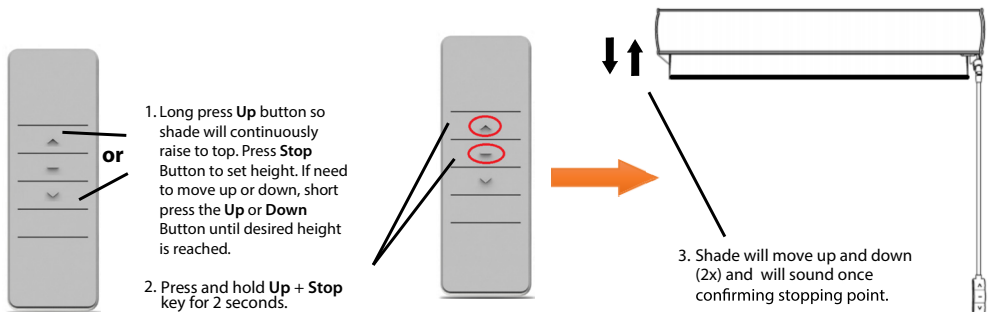
You are now in User Mode. Please move on to A. Setting the Top Limit or B. Setting the Bottom Limit

A. SETTING THE TOP LIMIT - USING THE MOTORIZED WAND



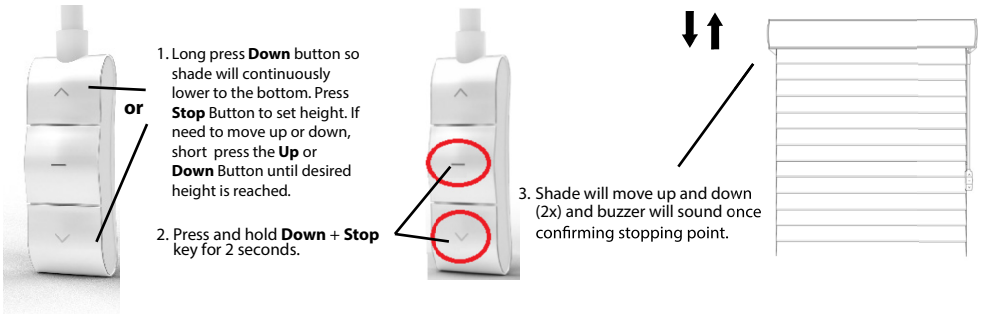
You have now set your Top Limit. Now you are ready to go to B. Setting the Bottom Limit

A. SETTING THE TOP LIMIT - USING THE REMOTE CONTROL



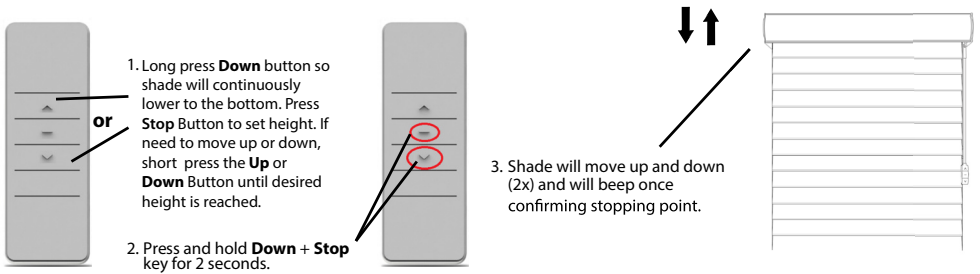
You have now set your Top Limit. Now you are ready to go to B. Setting the Bottom Limit

B. SETTING THE BOTTOM LIMIT - USING THE MOTORIZED WAND



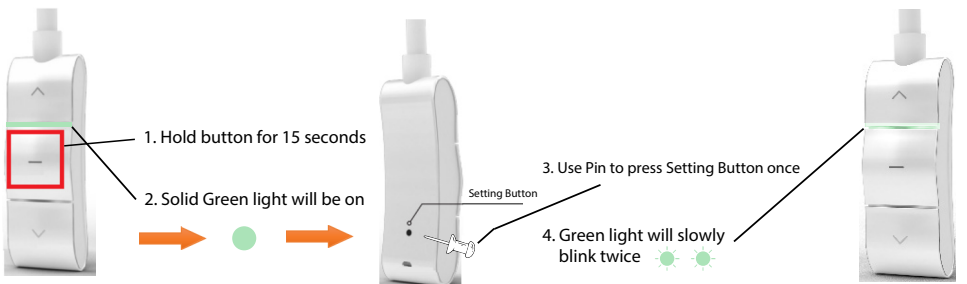
You have now set your Bottom Limit. Now you are ready to Exit User Mode

B. SETTING THE BOTTOM LIMIT - USING THE REMOTE CONTROL



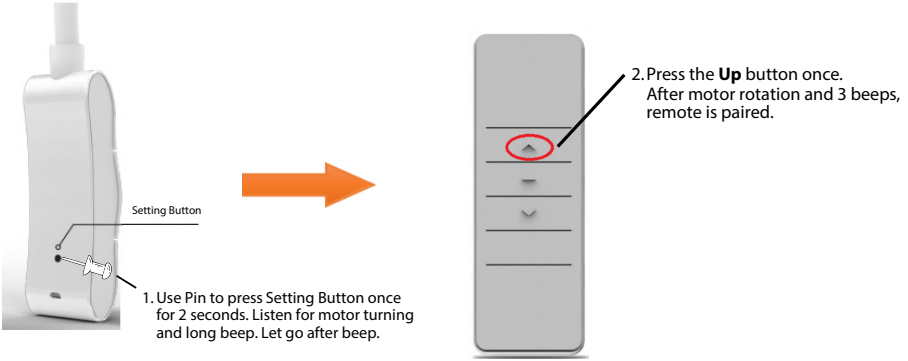
You have now set your Bottom Limit. Now you are ready to Exit User Mode

EXITING THE USER MODE

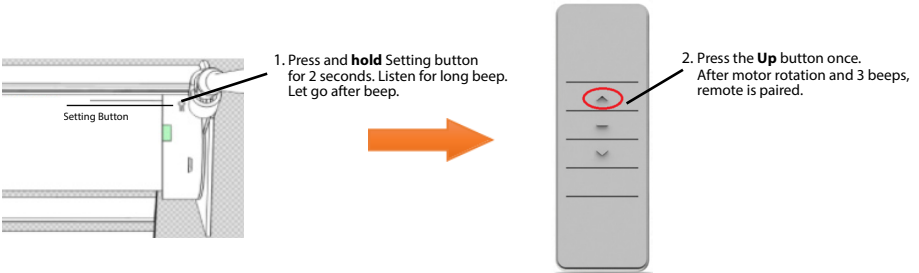


You have now exited User Mode.

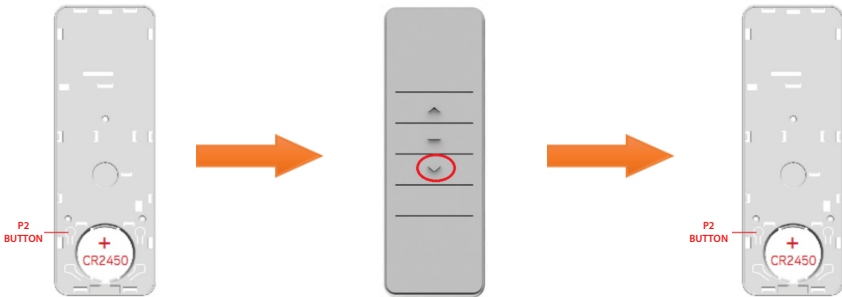
ADDING THE REMOTE CONTROL - USING THE MOTORIZED WAND



ADDING THE REMOTE CONTROL - USING THE HEADRAIL MOTOR CONTROL



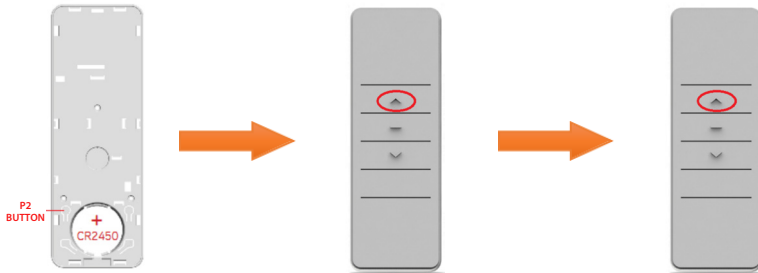
DELETING THE STOPPING POINTS



1. Press the **P2 button** on the remote control once, the motor will rotate and will beep once.
2. Press the **Down** button on the remote control once. The motor will rotate once and will beep once.
3. Press the **P2 button** on the remote control once again, the motor will rotate once and will beep 4 times, indicating that all stopping points have been deleted successfully.

SHADE LIFTING SPEED ADJUSTMENT - INCREASE SHADE LIFTING SPEED

THERE ARE THREE SHADE SPEEDS: 34R/MIN; 28R/MIN; 20R/MIN

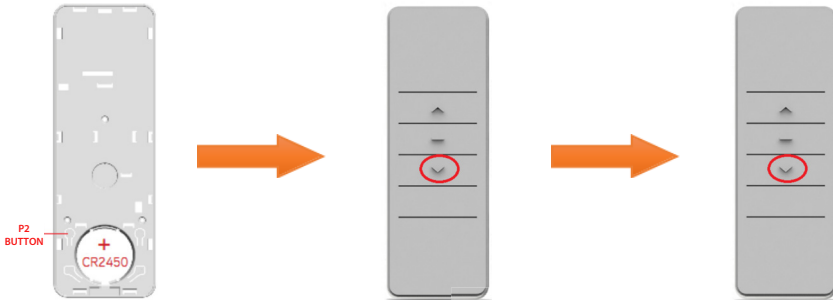


1. Press the **P2 button** on the remote control. The motor will rotate and will beep once.

2. Short press the **Up** button on the remote control for one second. The motor will rotate and will beep once.

3. Short press the **Up** button on the remote control for one second. The motor will rotate twice, and will beep once, and the motor speed will increase by one gear.
(If there is no rotation prompt, it means that the maximum gear has been reached)

REDUCE SHADE LIFTING SPEED

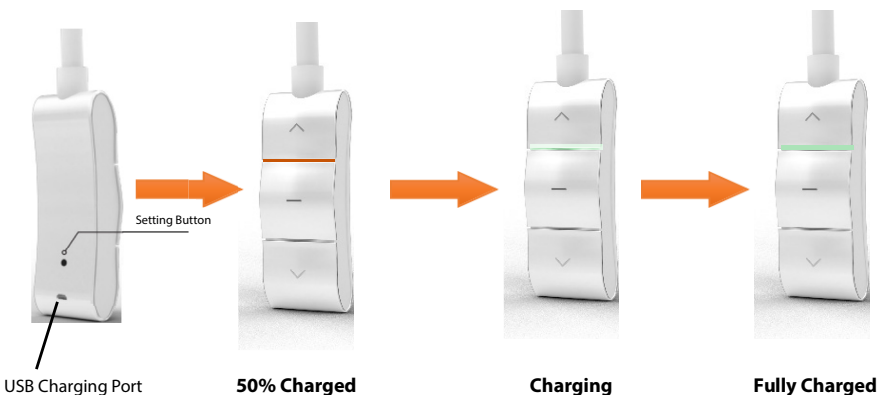


1. Short press the **P2 button** on the remote control for one second. The motor will rotate and will beep once.

2. Short press the **Down** button on the remote control for one second. The motor will rotate and will beep once.

3. Then short press the **Down** button on the remote control for one second. The motor will rotate twice and will beep once, and the motor speed will decrease by one gear.
(If there is no rotation prompt, it means that the low gear has been reached.)

CHARGING THE MOTORIZED WAND



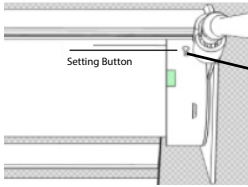
USB Charging Port

50% Charged

Charging

Fully Charged

DELETING THE REMOTE CONTROL - USING THE SHADE MOTOR



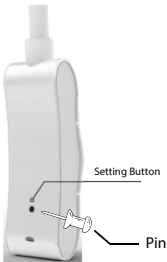
1. Press the shade motor setting button for about 2 seconds. After motor rotates, motor will beep for a long time.



2. Short press the **Down** button on the remote control for one second. The motor will rotate and beep 5 times, indicating that the remote control has successfully deleted the code.

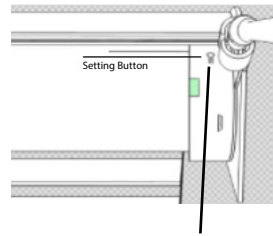
SHADE REVERSAL

USE THE MOTORIZED WAND TO SET



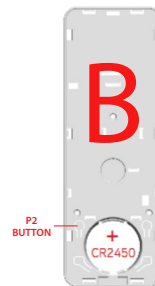
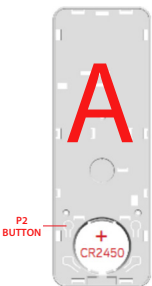
Using a pin, press and **hold** the setting button on the back of the motorized wand for more than 6 seconds. After the rotation prompts twice during this process, release the button and will beep 3 times; indicating that the motor direction is successfully switched.

OR



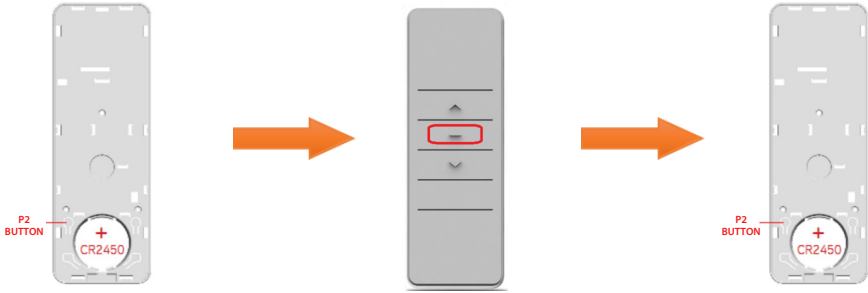
Press and **hold** the setting button of the shade motor for more than 6 seconds. After the rotation prompts three times during this process, release the button and will beep 3 times; indicating that the motor direction is successfully switched.

DELETING A REMOTE CONTROL - USING MULTIPLE REMOTE CONTROLS



1. Press the **P2 button** on the **A** remote again for one second. The motor will rotate once and will beep once.
2. Press the **P2 button** on the **A** remote once again for one second. The motor will rotate once and will beep once.
3. Press the **P2 button** of the **B** remote control (the remote control that needs to be deleted) for one second. The motor will rotate once and will beep 5 times, indicating that the B remote control code has been deleted.

DELETING ALL REMOTE CONTROLS



1. Press the **P2 button** on the remote control once, the motor will rotate once and will beep once.

2. Press the **Stop** button on the remote control again, the motor will rotate once and will beep once.

3. Press the **P2 button** on the remote control once again, the motor will rotate once and will beep 5 times, indicating that the code has been successfully deleted.

SWITCHING BETWEEN SHORT MOVEMENT / CONTINUOUS MOVEMENT MODE

USING THE REMOTE CONTROL



Press and hold the **UP** key and **Down** key on the remote control at the same time for 2 seconds. The motor will rotate once and will beep three times, indicating that the short movement / continuous movement mode switch is successful.

OR

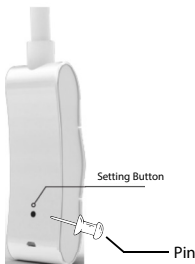
USING THE MOTORIZED WAND



Press and hold the **UP** key and **Down** key on the motorized wand at the same time for 2 seconds. The motor will rotate once and will beep three times, indicating that the short movement / continuous movement mode switching is successful.

RESTORING FACTORY SETTINGS

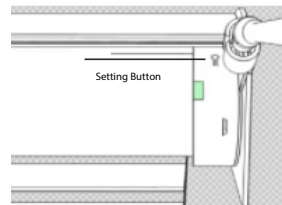
USE THE MOTORIZED WAND TO SET



Using a pin, press and hold the handle setting button for more than 10 seconds; during this process, the motor beeps 4 times after rotating the prompt three times; indicating that the motor has been restored to factory settings; all previous system function settings and remote control codes have been deleted.

OR

USE THE SHADE MOTOR BUTTON TO SET



Press and hold the shade motor setting button for more than 10 seconds; during this process, the motor beeps 4 times after the rotation prompts four times; it means that the motor has been restored to factory settings; all previous system function settings and remote control codes have been deleted.