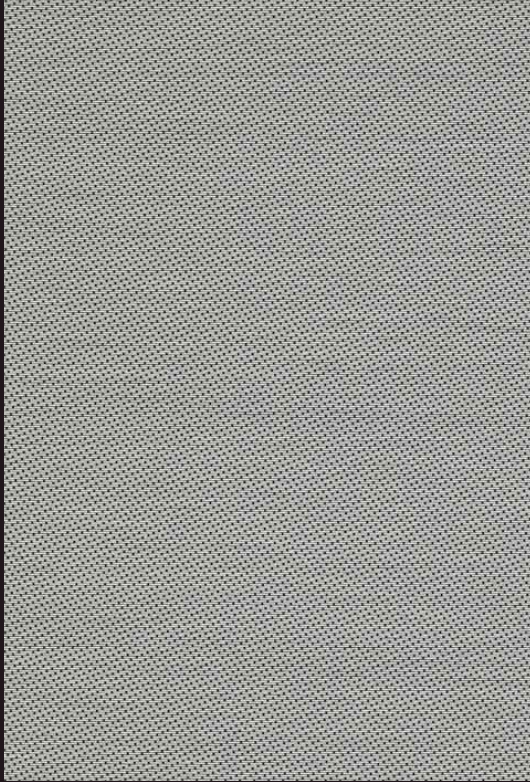
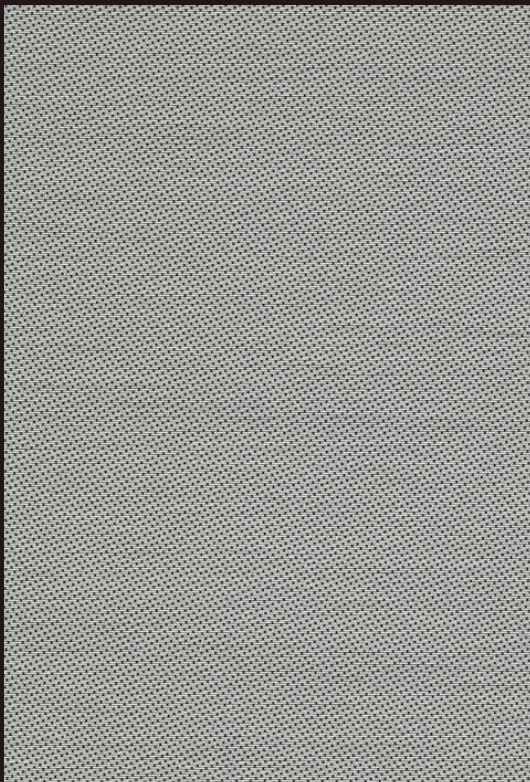


# T Screen™ & T Screen™ WITH KOOLBLACK™ TECHNOLOGY

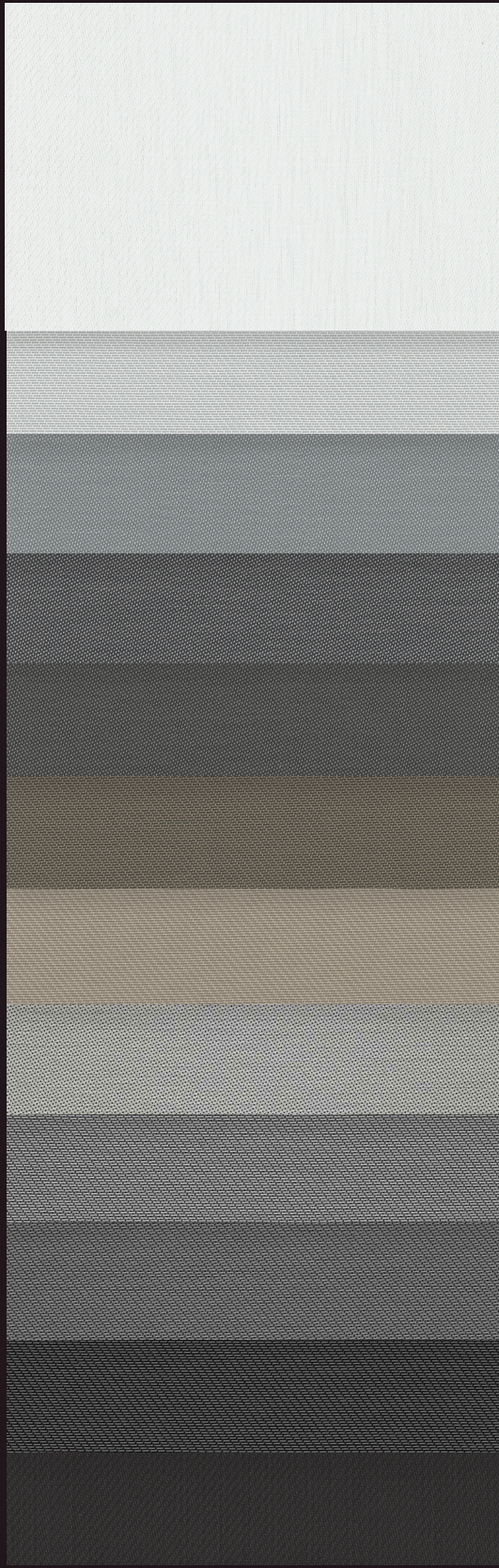
High Performance | 1% 3% openness



1% 030002 | Charcoal/White



3% 030002 | Charcoal/White



- 002002  
White/White
- 02M228  
White/  
White-Steel
- 002001  
White/Grey
- 002030  
White/Charcoal
- 007030  
Pearl/Charcoal
- 07M387  
Pearl/  
Charcoal-Fawn
- 07M287  
Pearl/  
Stone-Fawn
- 030002  
Charcoal/White\*
- 30M102  
Charcoal/  
Grey-White\*
- 00M122  
Charcoal/  
Grey-Stone\*
- 30M328  
Charcoal/  
Charcoal-Steel\*
- 30M329  
Charcoal/  
Charcoal-Iron\*

\*Available in KOOLBLACK® Technology.  
Fabrics sampled on the waterfall are 3% openness.

# Fabric Specifications

Fabric Style	UV Blockage	Composition	Standard Roll Length	Warranty
Satin	Approximately 97%-99%	36% Fiberglass, 64% Vinyl	30 ly (27 lm)	5 Year Exterior 10 Year Interior

## T Screen™

### Available Colors

White/White	White/White-Steel	White/Grey
White/Charcoal	Pearl/Charcoal	Pearl/Charcoal-Fawn
Pearl/Stone-Fawn	Charcoal/White	Charcoal/Grey-White
Charcoal/Grey-Stone	Charcoal/Charcoal-Steel	Charcoal/Charcoal-Iron

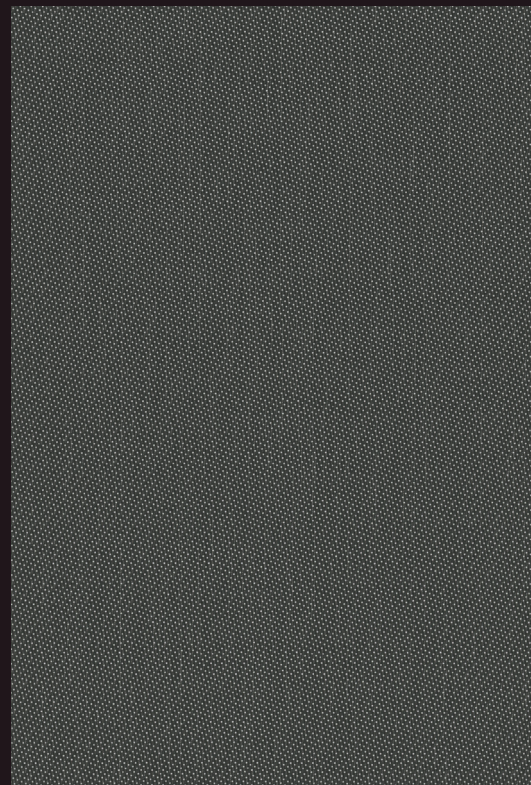
Openness	Item No.	Available Widths			Weight oz/yd <sup>2</sup> (±5%)	Thickness inches (±5%)
		78"	98"	122"		
1%	006701	•		•	13.83	0.028
3%	006703	•		•	12.59	0.027

## T Screen™ with KOOLBLACK TECHNOLOGY

### Available Colors

Charcoal/White	Charcoal/Grey-White	Charcoal/Grey-Stone
Charcoal/Charcoal-Steel	Charcoal/Charcoal-Iron	

Openness	Item No.	Available Widths			Weight oz/yd <sup>2</sup> (±5%)	Thickness inches (±5%)
		78"	98"	122"		
1%	009701		•	•	13.54	0.024
3%	009703		•	•	13.27	0.029



1% 030002 | Charcoal/White



3% 030002 | Charcoal/White



Looking for fenestration data?  
Scan here for complete fabric resources.

MermetUSA.com



Mermet Corporation

5970 N. Main Street  
1.866.902.9647

Cowpens, SC 29330  
info@MermetUSA.com

Product performance and specification data is subject to change, visit [www.Mermetusa.com](http://www.Mermetusa.com) for the most current information